

St Mary with St George
Hornsey
Parish Church

**A Church with
Deep Roots and Open Hearts**



www.hornseyparishchurch.com

PARISH PROFILE FEBRUARY 2026

WELCOME TO HORNSEY PARISH CHURCH

Hornsey Parish Church is a diverse, inclusive and welcoming church, with a congregation representative of the varied Hornsey community. Our services are rooted in Anglo-Catholic liturgy, but in a way that enables people to be themselves. A place where people from a wide range of church backgrounds have found a spiritual home through both contemplation and action in daily life. We want to build on this sense of prayer and belonging, listening to God to understand how best to reach out and serve our wider community, loving God, loving our neighbours and loving creation.

Welcome one another, therefore, just as Christ has welcomed you, for the glory of God.

Romans 15:7

Our buildings reflect the variety of Hornsey, with the main church building, dating from 1959, providing a light and uplifting hub for our worship and community activities, and St Mary's Tower at the other end of the parish, dating from c.1500, linking to our history and providing a beautifully contemplative and creative space. We recently completed works on our Open Door project, which removed physical barriers to make the church building and garden more accessible. The church is open daily, often providing a moment of calm for those who find themselves needing one.

On Sunday mornings, we have a traditional sung choral eucharist, which is streamed and recorded for those who cannot attend in person, with three bible readings, bells, responsorial psalm and anthem, and incense used on alternate weeks. Our children's workers provide the opportunity for children to explore their own faith and spirituality. On Sunday evenings we have Sacred Space, a contemplative eucharist utilising the quieter space of our Lady Chapel, including a short teaching on contemplative prayer and meditation, followed by an extended silence and Eucharist.

We also have mid-week services, celebrate major festivals, participate in ecumenical events across the parish and bless same-sex unions. We provide chaplains to the North London YMCA hostel and work very closely with our church primary school. We have been a training parish for curates for many years and would like this to continue.

We provide many different opportunities for people to explore their faith and find community, with regular study and reflection groups, a baby/toddler group, a young adults group, weekend retreats, and close links with the local food bank. Our recent Open Door project has unleashed a variety of creative fundraising activities, from Pride karaoke to wine tasting, an auction of promises and many more!

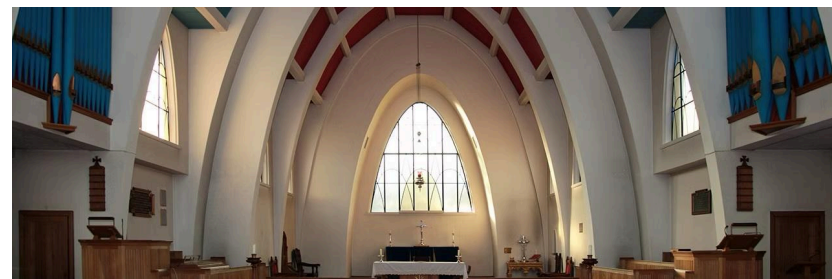


WHO ARE WE

Loving God

We are a parish with a sacramental focus and an appreciation for both liturgical tradition and times of stillness; and we balance that with a concern for ensuring, above all else, that everyone should feel welcomed and included, so we take a relaxed approach to individual quirks (small children wandering into the sanctuary or pulpit, for example, are simply greeted with a smile or hug, as appropriate).

Like many parishes, we are somewhat mixed in our churchmanship, with a Ministry Team that is firmly Anglo-Catholic, and a congregation that covers the entire range of liturgical orientations. For that reason, our smaller services tend to be more Catholic than our main services - for example, we would usually say the Angelus before Evening Prayer, but would not say it as part of a large-scale service. Perhaps the most vivid example of the spread of opinion in the parish is the very strong views held both for and against the use of incense. As a compromise, we currently use it in principle every other Sunday, though in practice we tend to take account of who will be present in any given week.



In addition to our more typically recognisable Parish Eucharist on a Sunday morning, we also have occasional services following different styles of worship and liturgy, including more contemplative, more musically-led or more Anglo-Catholic, for example services for Lent or Advent. These liturgies are mostly developed by individual members of the Ministry Team and musicians, and often make use of the Tower (either its interior or exterior space). We also anticipate that the outdoor space developed by our Open Door Project might be used for small liturgies. We also regularly run Advent and Lent reading groups and study groups often centred around poetry and art.

"HPC has made a difference in my life by giving me a space to grow spiritually and to serve."



Loving Neighbour

Hornsey Parish Church occupies several very flexible buildings allowing us to support and run a wide variety of spiritual, pastoral and community groups and activities. Since the pandemic, some of these groups have reduced in numbers but are evolving to make sure we are still providing the support and community that people need today. We collaborate with Hornsey Food Bank, run a Community Larder offering affordable groceries, and provide affordable hall space for community groups serving vulnerable populations. We cater for all ages, with “Noah’s Ark” (a group for under-5s and their carers); “Axios” (a social young adults group for community and faith exploration); Y Hornsey partnership provides safe spaces and mentoring for young people; our YMCA chaplaincy offers pastoral care for vulnerable young adults; and our weekly community lunches attract a cross-section of people.

"I am very pleased that I found you and hope that you will continue to shine as a light in the local community."

Loving Creation

We achieved the Rocha Silver Eco Church status in 2025, reflecting our commitment as a community to protect and appreciate God’s creation. Monthly HPC Ramblers walks in our lovely countryside cultivate spiritual attentiveness to God’s presence in creation. Our gardening club transforms tending church grounds into prayer in action, while visits to Walthamstow Wetlands inspire wonder at the intricate beauty of ecosystems. We share weekly “Green Tips” in our parish newsletter and have explored creation-centred liturgy and seasonal outdoor services at St Mary’s Tower, connecting environmental concern with spiritual growth.



THE RECTOR WE NEED

The person we are looking for is someone who:

- Is formed in the **Anglo-Catholic tradition** and so comfortable with traditional liturgy as well as being **theologically inclusive** and **liturgically open** to a diverse congregation;
- Has a **vision for growth**, including outreach skills geared towards local families and young people attracted by traditional sacramental worship and the contemplative opportunities offered by Hornsey Parish Church;
- Has the ability to work collaboratively with the existing Ministry Team to **manage, motivate, delegate to, and grow the group of volunteers** who administer our buildings, run the parish finances, conduct outreach in the wider Parish, organise groups, minister to children and young people etc.;
- Given the Parish's historic status at the centre of ecclesiastical life in Hornsey, has the **leadership and collaborative skills** needed to build relationships and work productively with our local cluster of churches and the local community (see *Wider parts of the role* and *Staffing* below);
- Has experience with **administration, fundraising and/or charity management** to support our ongoing Open Door project, and future projects.



*He has told you, O mortal, what
is good; and what does the LORD
require of you but to do justice,
and to love kindness, and to walk
humbly with your God?*

Micah 6:8

And also has:

- The **preaching skills** to make the Good News relatable and relevant to a diverse congregation;
- Experience and skill as a **mentor and coach** with the skills to support assistant curates and maintain the church to be selected as a training parish by the Diocese;
- A **prayerful and spiritual mindset** with an interest in contemplative prayer, ability to support others to develop in this way, and to lead non-standard services, including Sacred Space;
- A **pastoral heart**, particularly in dealing with elderly and vulnerable members of our church community and the wider Parish; and
- The ability to lead with **humility and humour**.

Wider parts of the role

The Rector of Hornsey Parish Church serves on several local boards. Two local charities from which we benefit - The Greig Trust and Hornsey Parochial Charities - require only 3 or 4 meetings a year. The Rector will also be an *ex officio* Governor of our parish school, St. Mary's, which is a more demanding role, and is additionally a Trustee of the Friends of Hornsey Church Tower.

We also have close links with the YMCA and provide 8 hours a week of chaplaincy, which is covered by curates or assistant chaplains.

Previously we participated in the North London Pastoral Assistants scheme, which has ceased to operate in Hornsey. The PCC would be very interested in working with a new incumbent to reinstate having pastoral assistants at Hornsey Parish Church.

WHERE ARE WE?

Hornsey: the community we serve

Located approximately 5 miles directly north of Charing Cross, we are nestled between four neighbouring areas: immediately to the north of us is the 200 acres of Alexandra Park, with the iconic Alexandra Palace; to the west is the leafy and prosperous Muswell Hill; to the east Wood Green and Tottenham, both areas of high deprivation, and to the south Crouch End, home to the UK's biggest community arts festival.

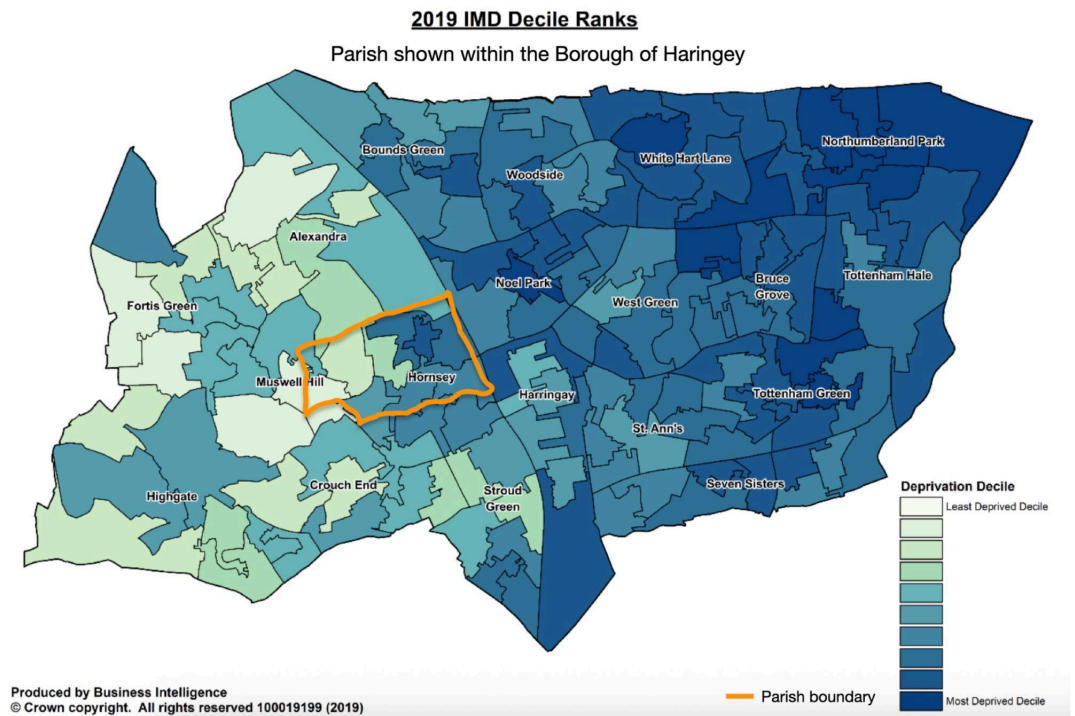
Hornsey itself is socioeconomically very mixed, with expensive Edwardian terraces hiding two estates (Campsbourne and Lightfoot) which are among the 5% most deprived areas in England - the Borough of Haringey Child Poverty Strategy shows their child poverty level at 43%-57%. Our geographical parish of 15,000 people is, like the borough of Haringey itself, long and thin, with income levels shifting west to east: the west end, adjacent to Muswell Hill, is affluent - for example, some of the houses on Cranley Gardens, where our church and Rectory are situated, have recently sold for up to £2 million - while the east end has pockets of deep deprivation. Hornsey is also home to young professionals, often commuting to jobs elsewhere in London.

Our parish primary school is right in the middle of the parish, and reflects the local diversity: our families speak 25 first languages, variously from Eastern Europe, South America, the Middle East and both Northern and Sub-Saharan Africa. 42% of our pupils are Black or dual heritage, and we have 40% Pupil Premium students. The school is a 20-minute walk from the church; nevertheless, there is a very close and mutually supportive relationship between the parish and the school, with one or more members

of the Ministry Team in school every day and providing a wide range of support.

The parish also contains a large Church of England secondary school - Greig City Academy - which is not directly affiliated with the parish and which has historically had its own independent chaplain.

The YMCA runs a 150-bed hostel for young people aged 18-30 just outside the parish boundaries.



Our ecclesiastical context



We are part of the Edmonton Area of the Diocese of London, which is a densely Anglo-Catholic area in the Church of England, and we have close and supportive relationships with our neighbouring Anglo-Catholic parishes. Five (soon to be six) of our neighbouring clergy come from Hornsey, either as previous curates or members of the congregation, and look forward to warmly welcoming our new Rector.

Historically we have been part of an entirely informal “cluster” with our neighbours Holy Innocents and Holy Trinity, Stroud Green,

which are themselves closely linked together. The latter is a small Fulham parish currently in vacancy; the Vicar of Holy Innocents was previously a curate at Hornsey Parish and is now our very supportive Area Dean, with whom we maintain extremely close ties.

For just as the body is one and has many members, and all the members of the body, though many, are one body, so it is with Christ.

1 Corinthians 12:12

Hornsey Parish is in the forefront of welcoming women clergy into Edmonton; we have had three successive woman curates, all of whom have subsequently been appointed to incumbent-level positions nearby. The Episcopal Area hierarchy is also very supportive, and includes a highly regarded Dean of Women’s Ministry. We collectively warmly welcome applications from women or priests in same-sex relationships.

Beyond the Church of England, we are blessed by being surrounded by a larger group of communities of faith among whom there is deep goodwill. There is a diversity of Christian communities nearby with whom we have close and cooperative relationships, including Baptist, Methodist, Moravian, and non-denominational churches. We have group services for the Week of Christian Unity, Good Friday, Pentecost, Harvest and Christmas, and have run community workshops together. We also have as neighbours (immediately outside the parish) two Jewish congregations and a mosque, all of whom are progressive and warmly welcome interfaith dialogue and support.



A STATEMENT FROM ST MARY’S SCHOOL

“We are very grateful for our connection with the Parish and for all the help and support that we get from the Church Team - they are a valued and integral part of our school. The Rector is a Governor, and helps shape our strategic direction, as well as widening our connections to the community.

The Team is present in the school in myriad ways - they lead assemblies every week, and support the spiritual development of our children by running faith-sharing groups and preparing children for First Communion and Confirmation; they also run art clubs, provide classroom support and general pastoral support, and mentor some of our most challenged children, as well as providing both formal and informal support for RE throughout the school. They do all this with a light touch and an equal sense of fun and of spiritual depth.

When we've gone through bad times they have always been there for us, particularly after the deaths of three of our staff members. They were there to listen, care, lead impromptu services, pray informally with those of us who wanted that, and help us to care for the children, who were also shocked and distressed.

Overall, they make a very positive contribution to our school life for all of us - Christian and non-Christian alike."

Further information about the school can be found at the following links:

[St Mary's School website](#)

[SIAMS report](#)

[OFSTED report](#)



OUR SERVICES

Regular services

Sunday 10:30am: Sung Eucharist: Common Worship, High Church in character with vestments, sanctus bells, etc. Separate liturgy in the Lady Chapel for our few children (typical congregation 40-70)

Sunday 6pm: Sacred Space: Contemplative Eucharist, minimalist, candlelit mass incorporating 15 minutes silence (typical congregation 4-8)

Monday 10am: Mass at Holy Innocents to gather with neighbouring parishes

Wednesday 11am: Contemplative Prayer Group with reading and about 30 minutes of shared silence

Thursday 11am: Said Eucharist, followed by community lunch

School liturgies

Members of the Ministry Team take assembly once a week, and the parish staff who run programmes at the school create ad-hoc contemplative liturgies for their weekly meetings with individual groups of children. The school has its own schedule of annual services in which the parish staff take part in various ways, sometimes at the school, and sometimes in church. The most unusual and beloved is "Donkey Day", in anticipation of Palm Sunday, when we hire a donkey to lead the school in procession around the streets of Hornsey waving palm branches and singing.

Choir and music

Hornsey Parish Church is blessed to have a number of very capable and active musicians, with a choir of around 10 core members led by our new Music Director supporting Sunday morning services and a substantial number of experienced singers who, as “friends of the choir”, join us for special occasions. The choir principally supports the Sunday morning Eucharist, at which we sing a responsorial psalm and post-communion anthem, typically in the Anglican choral tradition, but ranging from plainchant to songs from Sister Act! In recent years, we have had a summer concert where people generously shared their other musical talents, from virtuosic violin to medieval harp and Flanders and Swann.



Occasional services

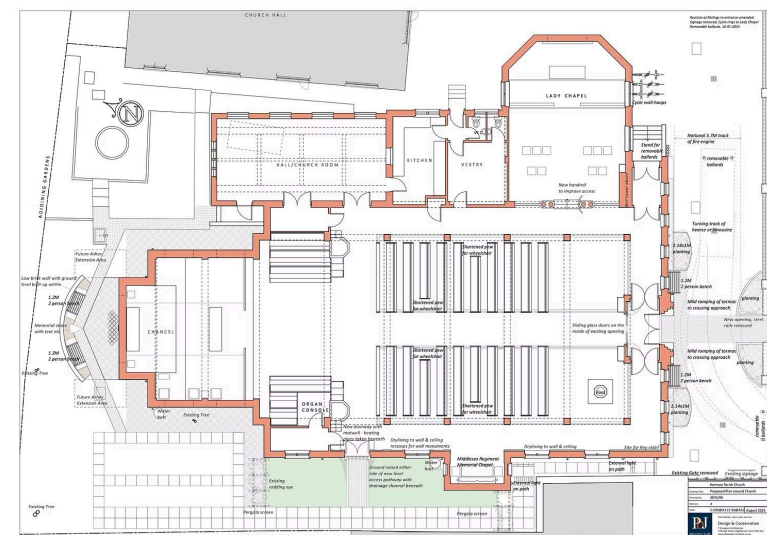
- | | |
|--------------------------------------|--|
| Admission to communion/confirmation: | Typically a small group of 8-12 children admitted to Holy Communion each year, with parish confirmation every summer usually led by the Area Bishop. |
| Baptisms: | Between 5-20 baptisms each year, typically children or grandchildren of members of the parish, or from the school. |
| Weddings and funerals: | We conduct a handful of these each year and are happy to perform same-sex blessings. |

OUR BUILDINGS

There has been a parish church in Hornsey since around 1300 and, through a long and varied history, we are now the Parish of St Mary with St George, with a modern church building at the west end of the parish and the old St Mary's church tower at the east end.

Parish Church

Hornsey Parish Church is a light, airy modernist building of 1959 in concrete and red brick, designed around an elliptical arch shape which is echoed in the windows of yellow and blue stained glass. We have a church room attached to the main church, a lady chapel and in the west aisle an area known as the Middlesex Chapel housing the old St Mary's altar. This area also houses the colours of the Middlesex regiment with whom we have had close links. A vestry, two toilets, a kitchen and a walk-in organ cupboard make up the rest of the main church building. We have recently developed a small remembrance garden and a pleasant outside area in which to sit.



St Mary's Tower



The Tower is what remains of St Mary's Church, dating back to around 1500, set in a consecrated but closed churchyard in the east end of the parish. We have used it variously for outdoor Eucharist services, community carols, scripture discussions, experimental poetry and music liturgies, and Shakespeare read-a-longs. There could be a big opportunity to utilise the Tower to connect and reach out further to the east end of the parish.

The tower is supported by an active group of friends who have formed a registered charity, the Friends of Hornsey Church Tower (FoHCT). FoHCT help care for the Tower and surrounding churchyard, maintaining them as a popular community asset. The PCC remains responsible for ongoing maintenance of the grade 2* listed building.



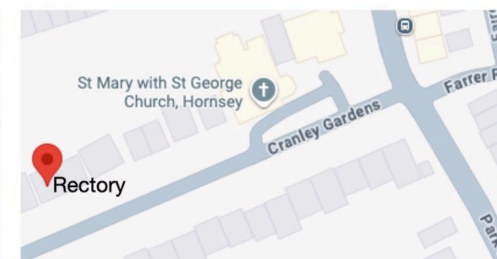
"The space is beautiful and the people who work there are warm and kind."

Accommodation

The Rectory is a spacious 4 (double) bedroom semi-detached house dating from the 1940s. It has an internal garage and a small drive. There are two downstairs living rooms, a kitchen and a study. It is approx 200 yards from HPC and is situated in Cranley Gardens which is a wide tree-lined street of

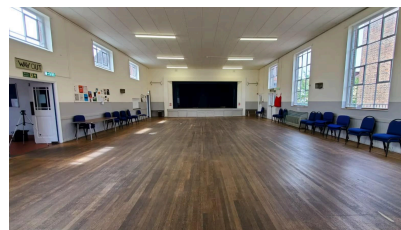
large Edwardian and 1920s semi-detached and detached houses. The garden is approx 200 feet long.

There is also curate's accommodation in the form of a 2-bedroom upstairs maisonette, with a tiny garden, at the geographical centre of the parish. All of the curates have enjoyed living there.



Church Hall

Adjoining HPC are two halls, one small and one large, which are regularly rented out for classes, meetings and functions. An area called the Marian Centre, comprising two inter-connecting rooms, functions as the church office. Appointing a paid manager in recent years has proved a great success and the hall has become an important community hub generating nearly £70,000 gross per annum. There is a car park shared with the church.



STAFFING

Ministry Team

Curate:	Our current curate completes her term this year and will be leaving after Easter. (Is officially YMCA Chaplain but most of the hands-on work now done by the Asst. Chaplain - see below).
Lay Schools Worker:	Runs all work for children in the parish and leads the parish team at St. Mary's School; in principle works 25 hours a week during term time (but in practice more).
Y Hornsey/ Families Worker:	Works full-time with young people and families in Hornsey; assists with parish children's work and provides pastoral mentoring at school; and preaches.
Chaplain (unpaid):	Founded the Contemplative Prayer Group and primarily does pastoral work.
Sacristan (unpaid):	Looks after sacred vessels and linens and prepares for services; also manages the kitchen and general tidiness/organisation.

Other paid staff

Hall Manager:	Oversees all issues to do with our Hall and Studio spaces and our lettings, as well as providing help with general parish administration (~15hours per month).
YMCA Assistant Chaplain:	Provides pastoral and spiritual care and runs courses at the YMCA. Also runs Advent/Lent courses in the parish.

Music Director:	Runs the choir and plays organ for Sunday morning services, selecting music collaboratively with the Rector.
Part-time bookkeeper:	The Parish Treasurer is a volunteer, and has the help of a paid assistant for 12 hours a month.
Parish Maintenance:	Competent and reliable maintenance man who regularly deals with small repairs on an ad hoc basis.

SAFEGUARDING

The parish has an experienced and active Safeguarding Team, led by our Parish Safeguarding Officer, Naomi Malone (our Lay Schools Worker) and has well-developed policies and procedures. Naomi is supported by an Evidence Checker and an Assistant Evidence Checker. Between them, these three ensure that every member of the Ministry Team, the PCC, the welcoming team, the Choir, and other people engaged in working or ministering in the parish have, as appropriate, been recruited per Safer Recruiting procedures, have received appropriate DBS clearance and, if applicable, have received safeguarding training to the level required for their position.

Speak out for those who cannot speak

Proverbs 31:8

The Parish's Safeguarding Team additionally includes other members of the Ministry Team, our Children's Champions, and one Church Warden, and meets three times a year. The parish used to have annual safeguarding training days on a Saturday; now, in line with the mission to ensure that the congregation understands that safeguarding is the common responsibility of us all, we observe Safeguarding Sunday.

In 2025 we invited as our preacher a representative from Safe Spaces, who also was available after the service to talk to people individually about any concerns they might have.

We have safeguarding posters up in many places around the church. These include information about our Safeguarding Officer and Team; child-height pictures of our Children's Champions, and, in the toilets, information about seeking help for domestic violence.

The Diocese of London has a Safeguarding Dashboard on which the parish logs all activity, and a Safeguarding Report is submitted to the PCC prior to every meeting.

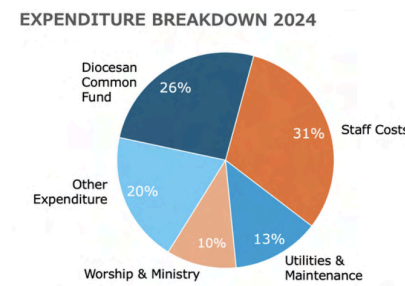
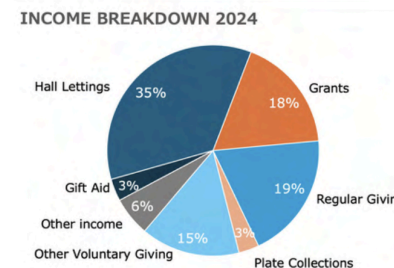
OUR FINANCES

Annual income (2024)	Annual expenditure (2024)	Common Fund contribution (2025)
£196,519	£193,402	£50,700

Income

Our finances reflect generous giving and careful stewardship. Multiple income streams provide stability - in 2024, these included:

- Hall lettings (c. £70,000)
- Regular giving (c. £39,000, plus plate collections and other giving)
- Grants and appeals (including c. £20,000 raised towards our Open Door project)
- General fundraising activities and other voluntary giving



Outgoings

Our main costs relate to the day-to-day running of the church, including our lay staff, clergy working expenses, and utilities and maintenance. The church's Common Fund offer was agreed with the Diocese as £50,700 for 2025 following careful consideration by the PCC.

As with most churches, building maintenance costs arise periodically, both for our main site and for the historic Tower. Although meeting larger costs can require careful thought and planning, in recent years we have managed to fund several significant repairs through a combination of regular income, specific appeals, use of reserves and grant funding.

The recent Open Door redevelopment work has been partly funded by an interest-free loan of £30,000 from the Diocese, which we will pay back by the end of 2027, supported by ongoing fundraising.

Financial management

The church treasurer is supported by a part-time bookkeeper and a finance committee of church members, reporting to the PCC. Audited accounts are submitted to the Charity Commission each year. The church has reserves in place, consisting of both unrestricted and restricted/designated funds.

Open Door

In 2025, we undertook building work to improve the accessibility of our church buildings. This included installing a new side door, introducing level access to the front door and garden with better landscaping, and shortening several pews to make space for wheelchair users, buggies etc. Works cost approximately £130,000 and were funded by a combination of fundraising in the parish – including events such as summer concerts, an auction of promises, wine tasting, karaoke and carol singing – legacies, grant funding and the previously-mentioned diocesan loan. We have ambitions for a second phase of work in the coming years.

Local Charities

The parish benefits greatly from its association with two local charities:

- [The Greig Trust](#), which disburses over £1 million a year for local Christian education, its first beneficiary being our parish school. (The Greig Trust funds our Lay Schools Worker and part of our Y Hornsey worker.)
- [Hornsey Parochial Charities](#), which disburses about £150,000 a year in support of economically deprived people in Hornsey, either through direct grants to individuals or through organisations/projects.

Thank you for your interest in Hornsey Parish Church. We hope this profile will give you a sense of who we are, and the community we serve. We are excited to welcome a new Rector to lead us in the coming years and we are praying for you as you consider whether you may be called to ministry here.



*I heard the voice of the Lord saying,
“Whom shall I send, and who will go for us?”
And I said,
“Here am I; send me!”*

Isaiah 6:8